

Use revised route (red bold dashed line) for new utility trench and interior conduit. All other references in notes remain unchanged. Bid item 50228 quantity has also been revised to reflect this trench route.

UTILITY TRENCH PATCH FOR ELECTRICAL CONDUITS UP ON OUTSIDE OF BUILDING TO ABOVE FOUNDATION WALL, THRU METAL BUILDING WALL TO INSIDE. CAP 3" SCH 80 PVC FOR FUTURE PV SOLAR. RUN 3/4" SCH. 80 PVC TO EXIST. PANEL 'N' FOR NEW SALT BARN POWER. REUSE AVAILABLE CIRCUITS. ALL CUTTING AND PATCHING BY CONTRACTOR SHALL BE WEATHER TIGHT AND NEAT IN APPEARANCE.

CENTER OF UTILITY TRENCH PATCH FOR ELECTRICAL. SEE SPECIAL PROVISIONS FOR PATCHING. PATCHING SHALL BE DONE IN A MANNER THAT SHALL BE LARGE RADIUS BENDS. NO BURIED PULL BOXES SHALL BE ALLOWED.

REINSTALL (2) PTZ CAMERAS UNDER NW ROOF OVERHANG, DESIGNATED AS C1 AND C2 ON SHEET 44001.01. VERIFY AIMING WITH OWNER PRIOR TO PUNCH LIST. SEE SHEET 7 FOR CONDUIT AND CABLE INFORMATION.

Reinstall (2) point to point data antennas under NW roof overhang and reconnect to PTZ cameras. Coordinate with City IT Division for proper aiming/alignment/testing.

ENGINEERING DIVISION OPERATIONS  
 1600 EMIL ST.

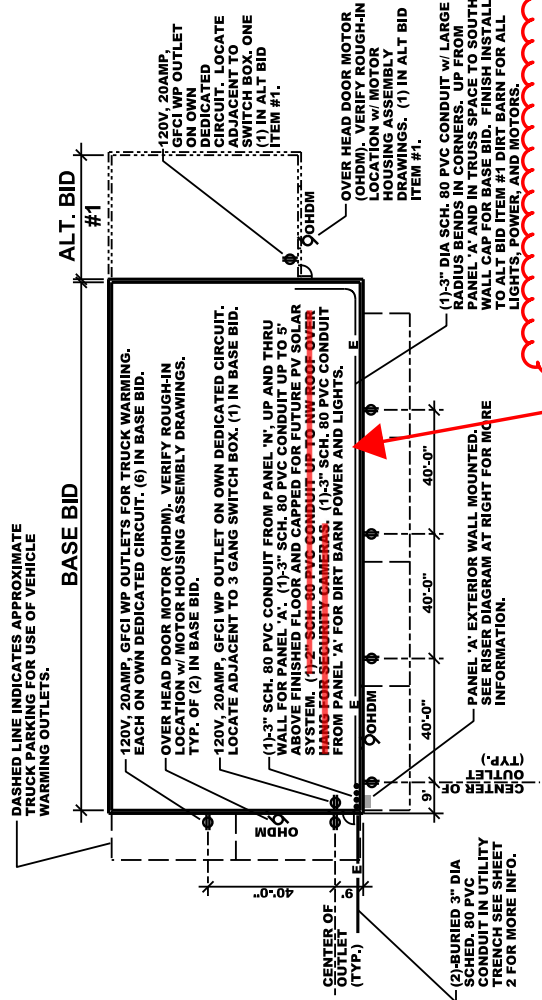
SET BACK AND BUILDING DIMENSIONS ARE BASED ON THE CONCEPTUAL STRUCTURE DESIGN ONLY. CONTRACTOR SHALL VERIFY FINAL BUILDING DESIGN AND PLACEMENT WITH THE CITY PROJECT MANAGER PRIOR TO STAKING BUILDING CORNERS AND STARTING EXCAVATION.

NEW ASPHALT PAVING AND CONCRETE PAVING SHOWN CROSSHATCHED. SEE CONCEPTUAL PLANS AND DETAILS FOR MORE INFORMATION.

EMIL ST.

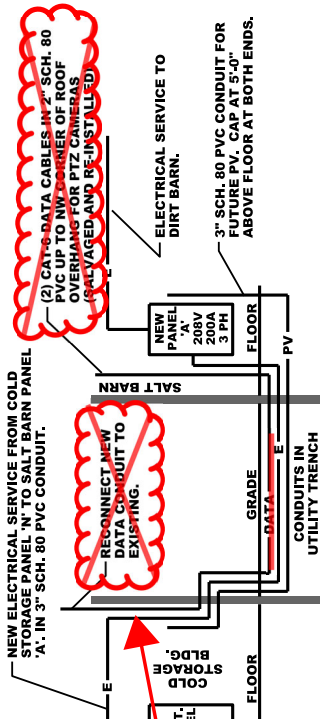
ELECTRICAL INSTALLATION NOTES:

1. THE ELECTRICAL CONTRACTOR SHALL BE RESPONSIBLE FOR REVIEWING ALL PLANS AND SPECIFICATIONS ASSOCIATED WITH THIS CONTRACT PRIOR TO BIDDING THE CONTRACT.
2. THE ELECTRICAL CONTRACTOR SHALL BE RESPONSIBLE FOR PROVIDING ALL PANELS, CONDUITS, AND WIRING AND OTHER RELATED MATERIALS REQUIRED FOR A CODE COMPLIANT INSTALLATION FOR THIS CONTRACT EXCEPT WHERE NOTED AS WORK BY OTHERS.
3. THE ELECTRICAL CONTRACTOR SHALL PROVIDE SUBMITTALS FOR EQUIPMENT AND MATERIALS TO THE OWNER FOR APPROVAL PRIOR TO ORDERING ANY MATERIALS OR EQUIPMENT.
4. THE ELECTRICAL CONTRACTOR SHALL COORDINATE WITH ALL OTHER TRADES PRIOR TO INSTALLING ANY EQUIPMENT.
5. ALL CONDUIT, FITTINGS, PULL BOXES, AND OTHER RELATED MATERIALS SHALL BE SCHEDULE 80 PVC UNLESS OTHERWISE NOTED. ALL BURIED BENDS SHALL BE LARGE RADIUS SWEEPS, NO BURIED PULL BOXES WILL BE PERMITTED.
6. ALL OUTLETS TO BE GFCI w/ WEATHERPROOF COVERS UNLESS OTHERWISE NOTED.
7. ALL CONTROL WIRING SHALL BE IN SEPARATE CONDUIT FROM LINE VOLTAGE.
8. ALL OUTLETS, LIGHTS AND MOTORS IN BASE BID (SALT BARN) AND ALT. BID ITEM #1 (DIRT BARN) SHALL BE POWERED FROM EXTERIOR PANEL 'A'.



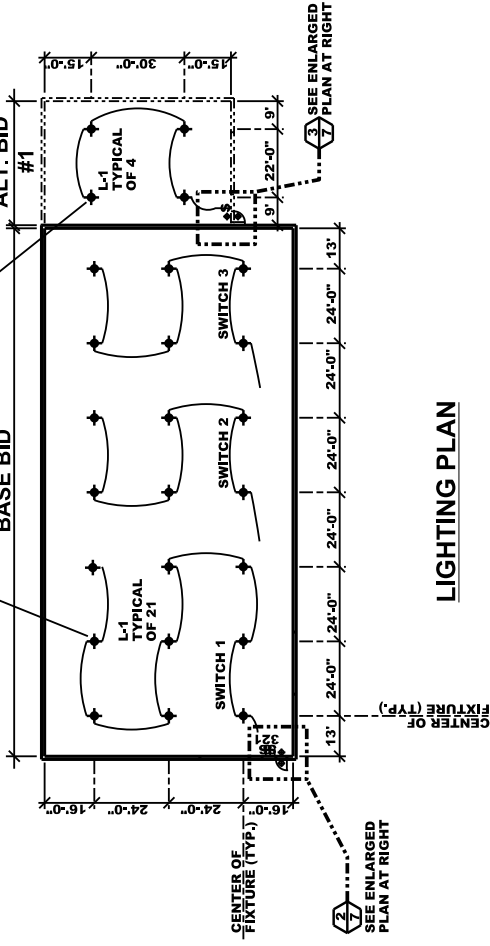
Delete all reference for data conduit and cabling. See also sheet 2.

1. ELECTRICAL DISTRIBUTION SCHEMATIC

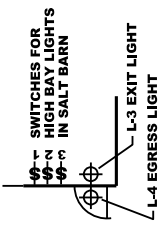


LIGHT FIXTURES:

- L-1: ALTECH ELECTRONICS HIGH BAY LED, U-UHRB0-150-50-165-DTG-1-1-H-D(4)-BL; 150W, 5000K, 120/277, TEMPERED GLASS LENS, HOOK MOUNT, BLACK, -30°A°; 10 YEAR WARRANTY
- L-2: SEE SHEET EL-100 FOR PHOTOMETRICS, LIGHT SCHEDULE, QUANTITIES AND LOCATIONS.
- L-3: EXIT EMERGENCY COMBO FOR COLD WEATHER, THE LIGHTING SOURCE, WMK12SVX12N-1-R-D-4X-2LA-D-CW4; -40°A°; WET LOCATION WALL MOUNTED; INTEGRAL Ni-Cd BATTERY; 120V; RED LETTERING
- L-4: EXTERIOR LED w/ EMERGENCY LIGHT FOR COLD WEATHER, THE LIGHTING SOURCE, BZ-1-LUX-ACSD-CW; -20°A° WALL MOUNTED; INTEGRAL Ni-Cd BATTERY; WET LOCATION; 120/277V; 12W; 5000K; w/ DAY/NIGHT PHOTO SENSOR, -4°A°



2. ENLARGED EXIT LIGHTING BASE BID



3. ENLARGED EXIT LIGHTING ALT BID ITEM #1

